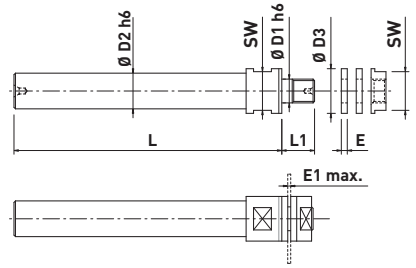


# Carbide Saw Arbors Front Loaded



## Right hand rotation (right hand thread)

Art. N°	D1 h <sub>6</sub>	D2 h <sub>6</sub>	D3	L	L1	E	SW	E1 max.
2810-5-6-N	5.0	6.0	10.0	70	9.0	2.0	8.0	6.0
2810-5-10-N	5.0	10.0	10.0	80	9.0	2.0	8.0	6.0
2810-6-10-N	6.0	10.0	12.0	80	9.5	2.0	10.0	6.0
2810-8-10-N	8.0	10.0	15.0	80	10.0	2.0	13.0	6.0
2810-8-12-N	8.0	12.0	15.0	90	10.0	2.0	13.0	6.0
2810-10-6-N	10.0	6.0	18.0	80	10.5	2.0	15.0	6.0
2810-10-10-N	10.0	10.0	18.0	80	10.5	2.0	15.0	6.0
2810-10-16-N	10.0	16.0	18.0	100	10.5	2.0	15.0	6.0
2810-13-16-N	13.0	16.0	22.0	110	11.0	2.0	19.0	6.0
2810-16-20-N	16.0	20.0	26.0	120	12.0	2.0	22.0	6.0
2810-22-16-N	22.0	16.0	32.0	120	12.0	2.0	27.0	6.0

Art. N°	D1 h <sub>6</sub>	D2 h <sub>6</sub>	D3	L	L1	E	SW	E1 max.
2811-16-10-N	16.0	10.0	22.0	80	8.0	2.0	19.0	3.0

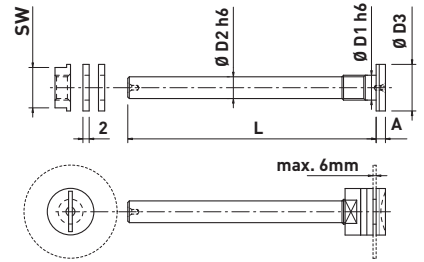
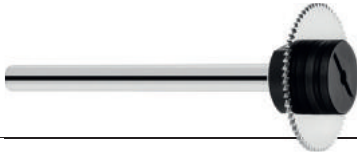
## For small slitting saws (right hand thread)

Art. N°	D1 h <sub>6</sub>	D2 h <sub>6</sub>	D3	L	L1	E	SW	E1 max.
2815-3-5-N	3.0	5.0	5.0	60	7.0	1.0	4.0	3.0
2815-5-6-N	5.0	6.0	7.5	70	7.0	1.0	6.0	3.0



2 distance rings and 1 nut are included with each arbor

## Carbide Saw Arbors Back Loaded



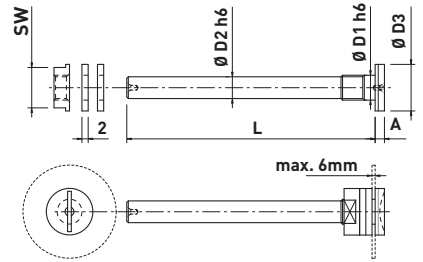
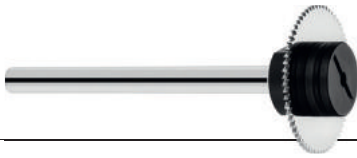
### Right hand rotation (left hand thread)

Art. N°	D1 h6	D2 h6	D3	L	L1	E	SW	E1 max.
2820-5-4-N	5.0	4.0	10.0	50	3.0	2.0	8.0	6.0
2820-6-5-N	6.0	5.0	12.0	60	3.0	2.0	10.0	6.0
2820-8-6-N	8.0	6.0	15.0	80	3.0	2.0	13.0	6.0
2820-8-7-N	8.0	7.0	15.0	80	3.0	2.0	13.0	6.0
2820-10-6-N	10.0	6.0	18.0	70	3.5	2.0	15.0	6.0
2820-10-8-N	10.0	8.0	18.0	90	3.5	2.0	15.0	6.0
2820-13-10-N	13.0	10.0	22.0	110	3.5	2.0	19.0	6.0
2820-16-12-N	16.0	12.0	26.0	120	3.5	2.0	22.0	6.0



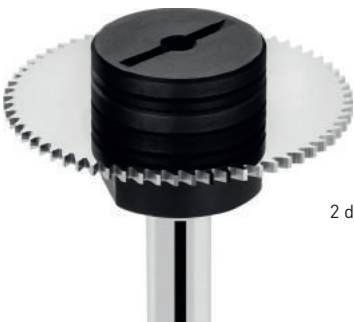
2 distance rings and 1 nut are included with each arbor

## Carbide Saw Arbors Back Loaded



### Left hand rotation (right hand thread)

Art. N°	D1 h <sub>6</sub>	D2 h <sub>6</sub>	D3	L	L1	E	SW	E1 max.
1820-5-4-N	5.0	4.0	10.0	50	3.0	2.0	8.0	6.0
1820-6-5-N	6.0	5.0	12.0	60	3.0	2.0	10.0	6.0
1820-8-6-N	8.0	6.0	15.0	70	3.0	2.0	13.0	6.0
1820-10-6-N	10.0	6.0	18.0	70	3.5	2.0	15.0	6.0



2 distance rings and 1 nut are included with each arbor