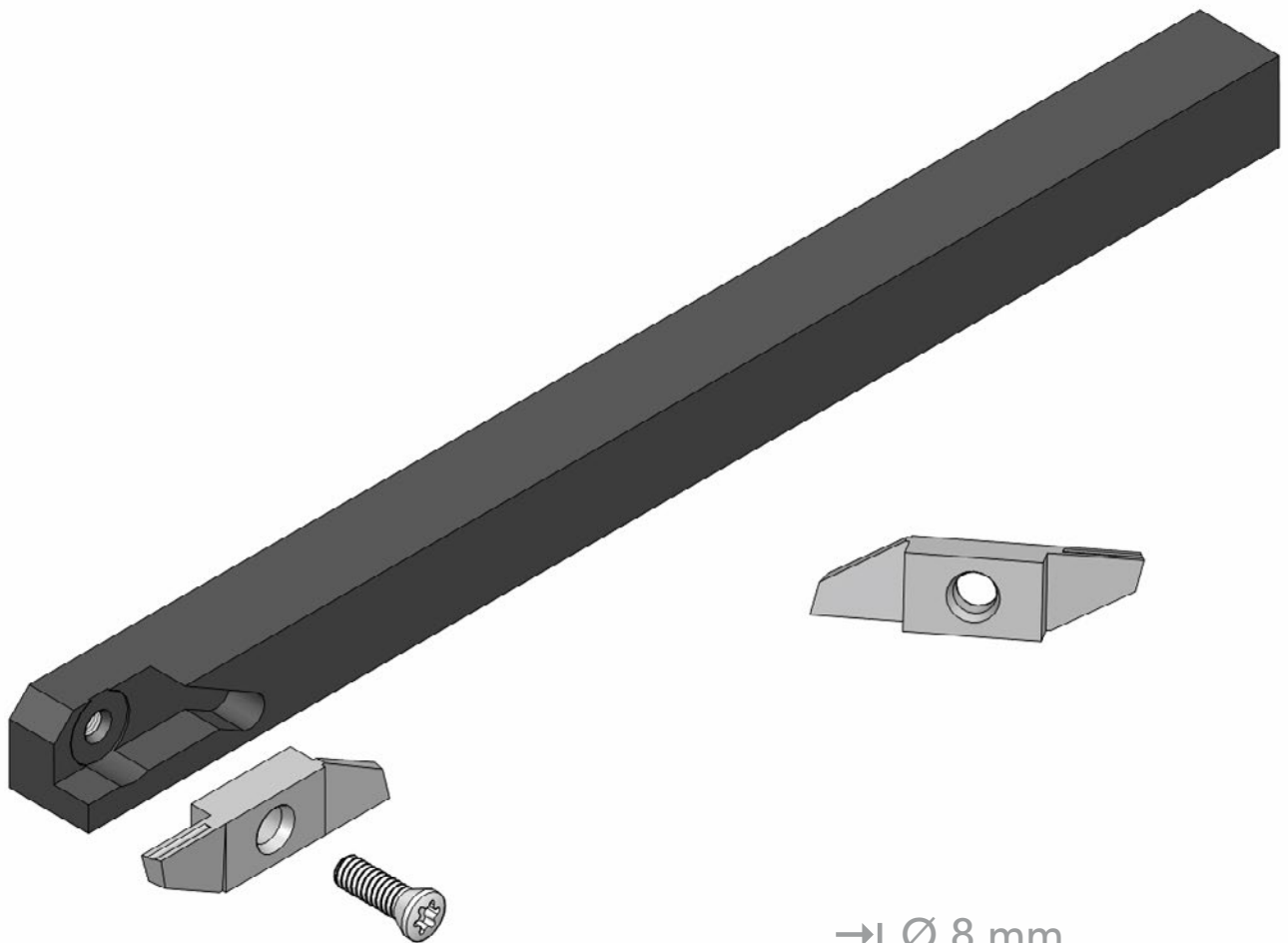
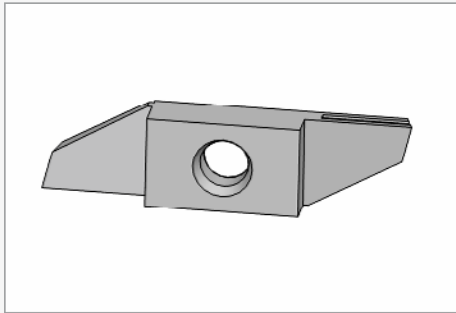


040 line

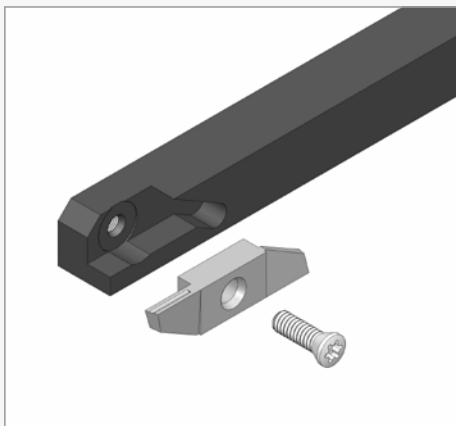


Presentation of 040 line
Vorstellung der 040 line
Présentation de la 040 line



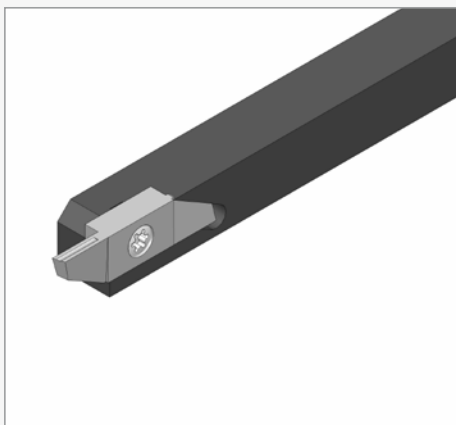
Advantages of 040 line

- Positioning of the insert guaranteed by the «V» shaped seating.
- 2 cutting edges available.
- Vast choice of inserts.



Vorteile der 040 line

- Positionierung der Wendeplatte garantiert dank der «V» Form des Wendeplattensitzes.
- 2 verfügbare Schneidkanten.
- Große Auswahl von Wendeplattengeometrien.



Avantages de la ligne 040 line

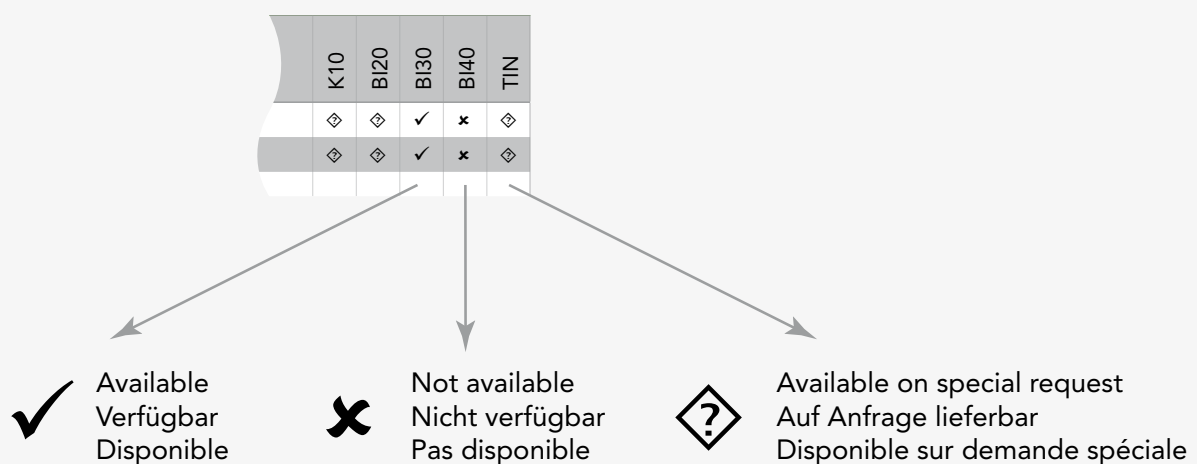
- Référencement de la plaquette assuré par le siège en «V».
- 2 arêtes de coupe disponibles.
- Large choix de plaquettes.

Coating of inserts

Beschichtung der Wendepplatten

Revêtement des plaquettes

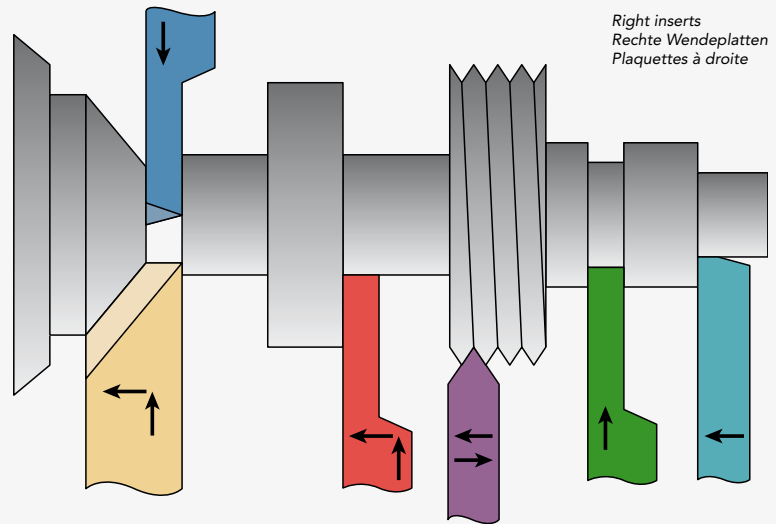
| Description Beschreibung Désignation | Composition Zusammensetzung Composition |
|--|---|
| K10 | Without coating Ohne Beschichtung Sans revêtement |
| ALL3 | AlTiN |
| BI20 | Ti ₂ N |
| BI30 | CrN |
| BI40 | TiAlN |
| TIN | TiN |



Field of application of 040 line
Anwendungsbereiche der 040 line
Champ d'application de la 040 line

Maximum cutting-off
Maximaler Abstechdurchmesser
Tronçonnage maximum
Ø 8 mm

Maximum turning
Maximale Spantiefe
Tournage maximum
ap 2 mm



Right inserts
Rechte Wendeplatten
Plaquettes à droite



Cutting off
Abstechen
Tronçonnage

Plunging-Turning
Einstechen-Drehen
Fonçage-Tournage

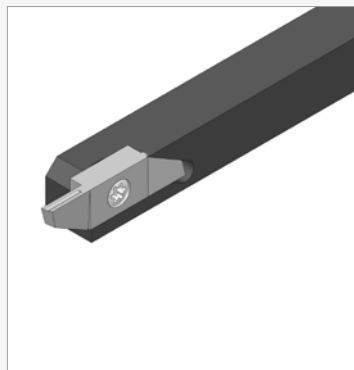
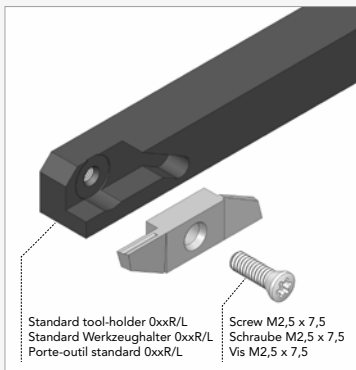
Plunging-Turning
Einstechen-Drehen
Fonçage-Tournage


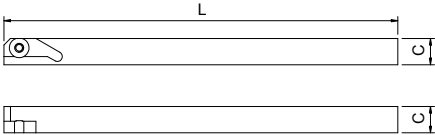

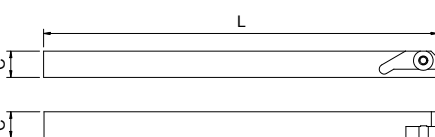
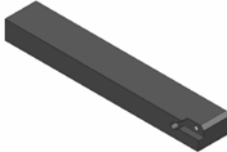
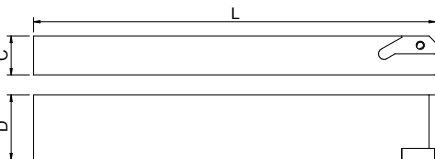
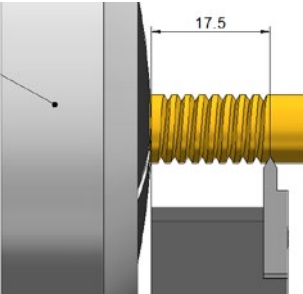
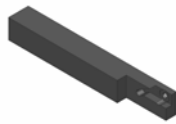



Turning
Drehen
Tournage

Grooving
Einstechen
Rainurage

Threading
Gewindestrehlen
Filetage

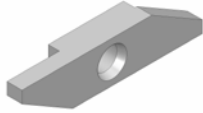
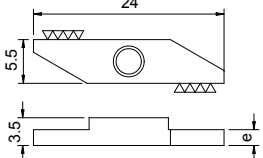
Standard fixation
Standard Befestigung
Fixation standard

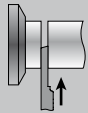


| | | | | | |
|--|--|---|--|---|---|
| 0xxR  | Right tool-holder Werkzeughalter rechts Porte-outil à droite  | Section C Querschnitt C Section C | Length L Länge L Longueur L | Article nr. Artikel Nr. N° Article | |
| | | 7 x 7 | 124 | 007R | |
| | | 8 x 8 | 124 | 008R | |
| | | 10 x 10 | 124 | 010R | |
| | | 12 x 12 | 124 | 012R | |
| | | 16 x 16 | 100 | 016R | |
| | | 20 x 20 | 100 | 020R | |
| 0xxL  | Left tool-holder Werkzeughalter links Porte-outil à gauche  | Section C Querschnitt C Section C | Length L Länge L Longueur L | Article nr. Artikel Nr. N° Article | |
| | | 7 x 7 | 140 | 007L | |
| | | 8 x 8 | 140 | 008L | |
| | | 10 x 10 | 124 | 010L | |
| | | 12 x 12 | 124 | 012L | |
| | | 16 x 16 | 100 | 016L | |
| | | 20 x 20 | 100 | 020L | |
| 0xx-20L  | Left offset threading tool-holder Versetzte linke Gewindehalter Porte-outil à gauche décalé pour filetage   Guide bush Führungsbüchse Canon | Section C Querschnitt C Section C | Section D Querschnitt D Section D | Length L Länge L Longueur L | Article nr. Artikel Nr. N° Article |
| | | 8 | 20 | 124 | 008-20L |
| | | 10 | 20 | 124 | 010-20L |
| | | 12 | 20 | 124 | 012-20L |
| | | <i>Use with 080R and 081R inserts</i> <i>Verwendung mit 080R und 081R Wendepplatten</i> <i>Utilisation avec les plaquettes 080R et 081R</i> | | | |
| 012R3 90  | Right «Pick-up» tool-holder «Pick-up» Werkzeughalter rechts Porte-outil «pick-up» à droite  | Section C Querschnitt C Section C | Length L Länge L Longueur L | Article nr. Artikel Nr. N° Article | |
| | | 12 x 12 | 90 | 012R 3 90 | |
| | | <i>Use with 053R inserts</i> <i>Verwendung mit 053R Wendepplatten</i> <i>Utilisation avec les plaquettes 053R</i> | | | |
| 001-1  | Key Schlüssel Clé Torx 8 | Article nr. Artikel Nr. N° Article | | | |
| | | 001-1 | | | |
| 001-2  | Screw for standart tool-holder Schraube für standard-Werkzeughalter Vis pour porte-outil standard M2,5 x 7,5 | Article nr. Artikel Nr. N° Article | | | |
| | | 001-2 | | | |

Blank
 Rohling
 Ebauche

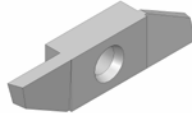
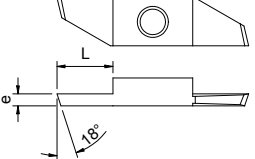
R : Right machining
 R : Bearbeitung rechts
 R : Usinage à droite

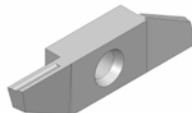
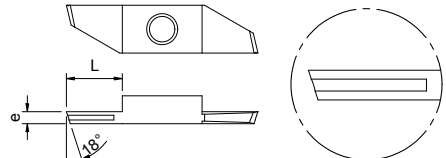
| 040R | Blank insert Rohling Plaquette ébauche | e | Article nr. Artikel Nr. N° Article | K10 | B120 | B130 | B140 | TIN |
|---|---|-----|--|-----|------|------|------|-----|
|  |  | 1,4 | 040R1,4 | ✓ | ◇ | ◇ | ◇ | ◇ |
| | | 1,7 | 040R1,7 | ✓ | ◇ | ◇ | ◇ | ◇ |
| | | 2,0 | 040R2,0 | ✓ | ◇ | ◇ | ◇ | ◇ |
| | | 2,2 | 040R2,2 | ✓ | ◇ | ◇ | ◇ | ◇ |
| | | 3,5 | 040R3,5 | ✓ | ◇ | ◇ | ◇ | ◇ |

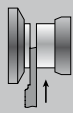


Cutting off \varnothing 8 mm
 Abstechen \varnothing 8 mm
 Tronçonnage \varnothing 8 mm

R : Right machining
 R : Bearbeitung rechts
 R : Usinage à droite

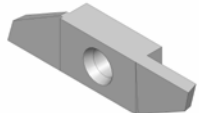
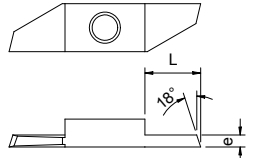
| 050R | Cutting insert 18° Abstechplatte 18° Tronçonneur 18° | e | L | Article nr. Artikel Nr. N° Article | K10 | B120 | B130 | B140 | TIN |
|---|---|-----|-----|--|-----|------|------|------|-----|
|  |  | 0,8 | 4 | 050R0,8 | ◇ | ✗ | ✗ | ✓ | ✗ |
| | | 1,0 | 4 | 050R1,0 | ◇ | ✓ | ◇ | ✓ | ✓ |
| | | 1,2 | 5 | 050R1,2 | ◇ | ✓ | ◇ | ✓ | ✓ |
| | | 1,5 | 6,5 | 050R1,5 | ◇ | ✓ | ◇ | ✓ | ✓ |
| | | 1,8 | 6,5 | 050R1,8 | ◇ | ✓ | ◇ | ✓ | ✓ |
| | | 2,0 | 6,5 | 050R2,0 | ◇ | ✓ | ◇ | ✓ | ✓ |

| 054R | Cutting insert with chip roller Abstechplatte mit Spanroller Tronçonneur avec roule-copeau | e | L | Article nr. Artikel Nr. N° Article | K10 | B120 | B130 | B140 | TIN |
|---|--|-----|-----|--|-----|------|------|------|-----|
|  |  | 1,0 | 4 | 054R1,0 | ◇ | ✓ | ◇ | ✓ | ◇ |
| | | 1,2 | 5 | 054R1,2 | ◇ | ✓ | ◇ | ✓ | ◇ |
| | | 1,5 | 6,5 | 054R1,5 | ◇ | ✓ | ◇ | ✓ | ◇ |
| | | 2,0 | 6,5 | 054R2,0 | ◇ | ✓ | ◇ | ✓ | ◇ |

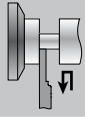


Opposite cutting off \varnothing 8 mm
 Umgekehrtes Abstechen \varnothing 8 mm
 Tronçonnage opposé \varnothing 8 mm

R : Right machining
 R : Bearbeitung rechts
 R : Usinage à droite

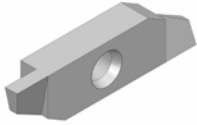
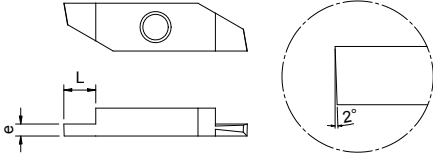
| 053R | Opposite cutting insert 18° Umgekehrte Abstechplatte 18° Tronçonneur inversé 18° | e | L | Article nr. Artikel Nr. N° Article | K10 | B120 | B130 | B140 | TIN |
|---|--|-----|-----|--|-----|------|------|------|-----|
|  |  | 1,0 | 4,0 | 053R1,0 | ◇ | ✓ | ◇ | ◇ | ◇ |
| | | 1,2 | 5,0 | 053R1,2 | ◇ | ✓ | ◇ | ✓ | ◇ |
| | | 1,5 | 6,5 | 053R1,5 | ◇ | ✓ | ◇ | ✓ | ◇ |
| | | 1,8 | 6,5 | 053R1,8 | ◇ | ✓ | ◇ | ◇ | ◇ |
| | | 2,0 | 6,5 | 053R2,0 | ◇ | ✓ | ◇ | ◇ | ◇ |

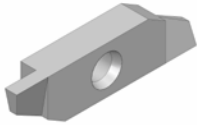
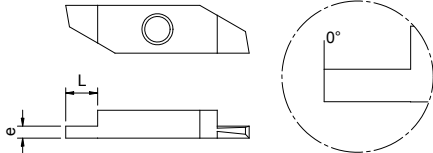
Use with 0xxL tool-holders
 Verwendung mit 0xxL Werkzeughalter
 Utilisation avec les porte-outils 0xxL

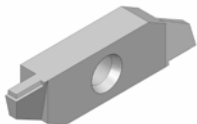
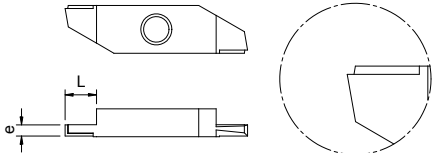


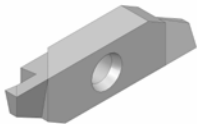
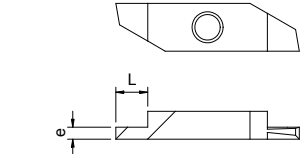
Back turning
Drehen hinten
Tournage arrière

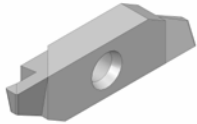
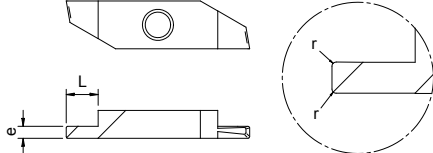
R : Right machining
R : Bearbeitung rechts
R : Usinage à droite

| 060R | Back turning insert 2° Drehplatte hinten 2° Tournage arrière 2° | e | L | Article nr. Artikel Nr. N° Article | K10 | B120 | B130 | B140 | TIN |
|---|---|-----|-----|--|-----|------|------|------|-----|
|  |  | 1,0 | 2,5 | 060R1,0 | ◇ | ✓ | ✗ | ✗ | ✗ |
| | | 1,2 | 3,0 | 060R1,2 | ◇ | ✓ | ◇ | ◇ | ✓ |
| | | 1,5 | 3,0 | 060R1,5 | ◇ | ✓ | ◇ | ◇ | ✓ |
| | | 1,8 | 4,5 | 060R1,8 | ◇ | ✓ | ◇ | ◇ | ✓ |
| | | 2,0 | 4,5 | 060R2,0 | ◇ | ✓ | ◇ | ◇ | ✓ |

| 060RP | Back turning insert 0° Drehplatte hinten 0° Tournage arrière 0° | e | L | Article nr. Artikel Nr. N° Article | K10 | B120 | B130 | B140 | TIN |
|---|--|----------|-----|--|-----|------|------|------|-----|
|  |  | 0,5 | 2,5 | 060RP0,5 | ◇ | ✗ | ✗ | ✓ | ✗ |
| | | 0,8 | 2,5 | 060RP0,8 | ◇ | ✓ | ✗ | ✗ | ✗ |
| | | 1,0 | 2,5 | 060RP1,0 | ◇ | ✓ | ✗ | ✓ | ✗ |
| | | 1,2 | 3,0 | 060RP1,2 | ◇ | ✓ | ◇ | ◇ | ◇ |
| | | 1,5 | 3,0 | 060RP1,5 | ◇ | ✓ | ◇ | ◇ | ◇ |
| | | 1,8 | 4,5 | 060RP1,8 | ◇ | ✓ | ◇ | ◇ | ◇ |
| 2,0 | 4,5 | 060RP2,0 | ◇ | ✓ | ◇ | ◇ | ◇ | | |

| 060RPX | Back turning insert 0° with chip breaker Drehplatte hinten 0° mit Spanbrecher Tournage arrière 0° avec brise-copeau | e | L | Article nr. Artikel Nr. N° Article | K10 | B120 | B130 | B140 | TIN |
|---|---|-----|-----|--|-----|------|------|------|-----|
|  |  | 1,2 | 3,0 | 060RPX1,2 | ◇ | ◇ | ✓ | ◇ | ◇ |
| | | 1,5 | 3,0 | 060RPX1,5 | ◇ | ◇ | ✓ | ◇ | ◇ |
| | | 1,8 | 4,5 | 060RPX1,8 | ◇ | ◇ | ✓ | ◇ | ◇ |

| 061R | Back turning insert with «parisian cut» Drehplatte hinten mit «Pariserschliff» Tournage arrière avec «coupe parisienne» | e | L | Article nr. Artikel Nr. N° Article | K10 | B120 | B130 | B140 | TIN |
|---|---|-----|-----|--|-----|------|------|------|-----|
|  |  | 1,0 | 2,5 | 061R1,0 | ◇ | ✓ | ✗ | ✓ | ✗ |
| | | 1,2 | 3,0 | 061R1,2 | ◇ | ✓ | ◇ | ✓ | ✓ |
| | | 1,5 | 3,0 | 061R1,5 | ◇ | ✓ | ◇ | ✓ | ✓ |
| | | 1,8 | 4,5 | 061R1,8 | ◇ | ✓ | ✗ | ✗ | ✗ |
| | | 2,0 | 4,5 | 061R2,0 | ◇ | ✓ | ◇ | ✓ | ✓ |
| | | 2,5 | 4,5 | 061R2,5 | ◇ | ✓ | ◇ | ✓ | ✓ |

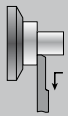
| 061R - r | Back turning insert with «parisian cut» Drehplatte hinten mit «Pariserschliff» Tournage arrière avec «coupe parisienne» | e | L | r | Article nr. Artikel Nr. N° Article | K10 | B120 | B130 | B140 | TIN |
|---|---|-----|-----|-----|--|-----|------|------|------|-----|
|  |  | 1,5 | 3,0 | 0,1 | 061R1,5 - r 0,1 - | ◇ | ✓ | ◇ | ✓ | ◇ |
| | | 1,5 | 3,0 | 0,2 | 061R1,5 - r 0,2 - | ◇ | ✓ | ◇ | ✓ | ◇ |
| | | 2,0 | 4,5 | 0,1 | 061R2,0 - r 0,1 - | ◇ | ✓ | ◇ | ✓ | ◇ |
| | | 2,0 | 4,5 | 0,2 | 061R2,0 - r 0,2 - | ◇ | ✓ | ◇ | ✓ | ◇ |

| 062R | Back turning insert with «parisian cut» Drehplatte hinten mit «Pariserschliff» Tourneur arrière avec «coupe parisienne» | e | L | Article nr. Artikel Nr. N° Article | | K10 | B120 | B130 | B140 | TiN |
|------|---|-----|-----|--|---|-----|------|------|------|-----|
| | | | | | | | | | | |
| | | 0,5 | 4,5 | 062R1,6 | ◇ | ◇ | ◇ | ✓ | ◇ | |

| 062RO | Back turning insert, cut 0° Drehplatte hinten, Schnitt 0° Tourneur arrière, coupe 0° | e | L | Article nr. Artikel Nr. N° Article | | K10 | B120 | B130 | B140 | TiN |
|-------|--|---|---|--|--|-----|------|------|------|-----|
| | | | | | | | | | | |

| 066R | Back turning insert with «W» chip roller Drehplatte hinten mit «W» Spanroller Tourneur arrière avec roule-copeau «W» | A | B | L | Article nr. Artikel Nr. N° Article | | K10 | ALL3 | B120 | B130 | B140 | TiN |
|------|--|---|---|---|--|--|-----|------|------|------|------|-----|
| | | | | | | | | | | | | |

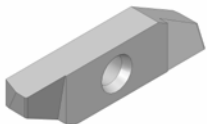
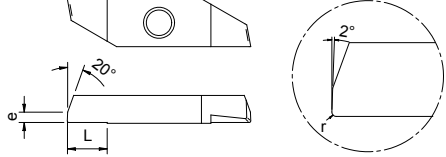
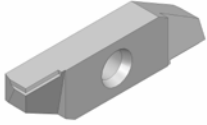
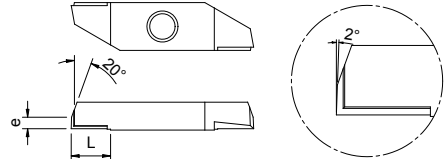
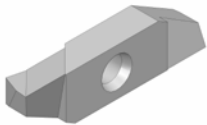
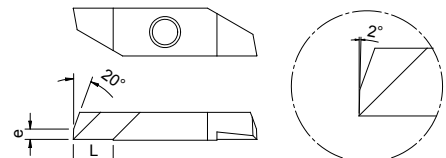
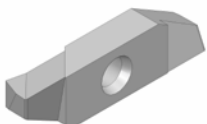
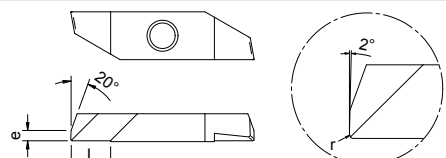
| 066R - r | Back turning insert with «W» chip roller and radius Drehplatte hinten mit «W» Spanroller und Radius Tourneur arrière avec roule-copeau «W» et rayon | A | B | L | Article nr. Artikel Nr. N° Article | | K10 | ALL3 | B120 | B130 | B140U | TiN |
|----------|---|-----|---|-----|--|---|-----|------|------|------|-------|-----|
| | | | | | | | | | | | | |
| | | 0,7 | 2 | 3,5 | 066R3,5 - r 0,05 - | ✓ | ◇ | ✗ | ✗ | ✓ | ◇ | |

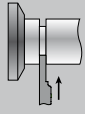


Front turning
Drehen vor dem Bund
Tournage avant

R : Right machining
R : Bearbeitung rechts
R : Usinage à droite

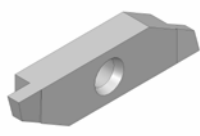
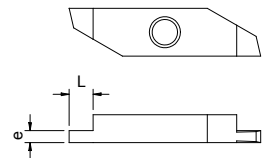
| 064R | Front turning insert Drehplatte vorne Tourneur avant | e | L | Article nr. Artikel Nr. N° Article | | K10 | B120 | B130 | B140 | TiN |
|------|--|---|---|--|--|-----|------|------|------|-----|
| | | | | | | | | | | |

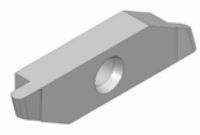
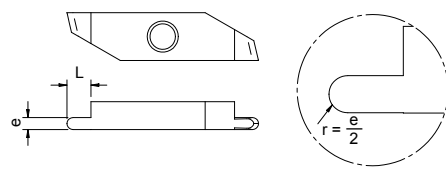
| 064R - r | | Front turning insert with radius Drehplatte vorne mit Radius Tourneur avant avec rayon | e | L | r | Article nr. Artikel Nr. N° Article | K10 | B120 | B130 | B140 | TIN |
|---|---|--|-----|-----|-----|--|-----|------|------|------|-----|
|  |  | | 1,5 | 5,0 | 0,1 | 064R - r 0,1 - | ◇ | ✓ | ◇ | ✓ | ◇ |
| | | | 1,5 | 5,0 | 0,2 | 064R - r 0,2 - | ◇ | ✓ | ◇ | ✓ | ◇ |
| 064RX | | Front turning insert with chip breaker Drehplatte vorne mit Spanbrecher Tourneur avant avec brise-copeau | e | L | | Article nr. Artikel Nr. N° Article | K10 | B120 | B130 | B140 | TIN |
|  |  | | 1,5 | 5,0 | | 064RX | ◇ | ◇ | ✓ | ◇ | ◇ |
| 065R | | Front turning insert with «parisian cut» Drehplatte vorne mit «Pariserschliff» Tourneur avant avec «coupe parisienne» | e | L | | Article nr. Artikel Nr. N° Article | K10 | B120 | B130 | B140 | TIN |
|  |  | | 1,5 | 5,0 | | 065R | ◇ | ✓ | ◇ | ✓ | ✓ |
| 065R - r | | Front turning insert with «parisian cut» and radius Drehplatte vorne mit «Pariserschliff» und Radius Tourneur avant avec «coupe parisienne» et rayon | e | L | r | Article nr. Artikel Nr. N° Article | K10 | B120 | B130 | B140 | TIN |
|  |  | | 1,5 | 5,0 | 0,1 | 065R - r 0,1 - | ◇ | ✓ | ◇ | ✓ | ◇ |
| | | | 1,5 | 5,0 | 0,2 | 065R - r 0,2 - | ◇ | ✓ | ◇ | ✓ | ◇ |

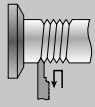


Grooving
 Einstechen
 Rainurage

R : Right machining
 R : Bearbeitung rechts
 R : Usinage à droite

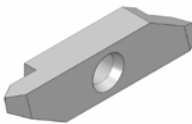
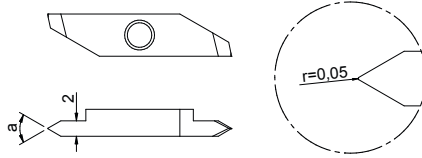
| 070R | Grooving insert Einsteckplatte Plaquette de rainurage | e | L | Article nr. Artikel Nr. N° Article | K10 | B10 | B20 | B30 | B40 | TIN |
|---|---|------|-----|--|-----|-----|-----|-----|-----|-----|
|  |  | 0,25 | 1,0 | 070R0,25 | ◇ | ✘ | ✘ | ✓ | ✘ | ✘ |
| | | 0,35 | 1,0 | 070R0,35 | ◇ | ✓ | ◇ | ◇ | ◇ | ◇ |
| | | 0,4 | 1,0 | 070R0,4 | ◇ | ✓ | ◇ | ◇ | ◇ | ◇ |
| | | 0,5 | 1,5 | 070R0,5 | ◇ | ✓ | ◇ | ◇ | ◇ | ◇ |
| | | 0,6 | 1,5 | 070R0,6 | ◇ | ✓ | ◇ | ◇ | ◇ | ◇ |
| | | 0,7 | 1,5 | 070R0,7 | ◇ | ✓ | ◇ | ◇ | ◇ | ◇ |
| | | 0,8 | 1,5 | 070R0,8 | ◇ | ✓ | ◇ | ◇ | ◇ | ◇ |
| | | 0,9 | 2,0 | 070R0,9 | ◇ | ✓ | ◇ | ◇ | ◇ | ◇ |
| | | 1,0 | 2,5 | 070R1,0 | ◇ | ✓ | ◇ | ◇ | ◇ | ◇ |
| | | 1,1 | 2,5 | 070R1,1 | ◇ | ✓ | ◇ | ◇ | ◇ | ◇ |
| | | 1,2 | 2,5 | 070R1,2 | ◇ | ✓ | ◇ | ◇ | ◇ | ◇ |
| | | 1,3 | 2,5 | 070R1,3 | ◇ | ✓ | ◇ | ◇ | ◇ | ◇ |
| | | 1,4 | 2,5 | 070R1,4 | ◇ | ✓ | ◇ | ◇ | ◇ | ◇ |
| | | 1,5 | 2,5 | 070R1,5 | ◇ | ✓ | ◇ | ◇ | ◇ | ◇ |

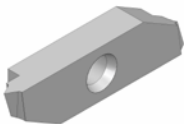
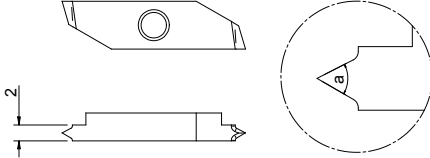
| 071R | Grooving insert with radius Einsteckplatte mit Radius Plaquette de rainurage avec rayon | e | L | r | Article nr. Artikel Nr. N° Article | K10 | B10 | B20 | B30 | B40 | TIN |
|---|---|-----|-----|------|--|-----|-----|-----|-----|-----|-----|
|  |  | 0,3 | 1,5 | 0,15 | 071R0,3 - r 0,15 - | ◇ | ◇ | ◇ | ✓ | ◇ | |
| | | 0,4 | 1,5 | 0,2 | 071R0,4 - r 0,2 - | ◇ | ◇ | ◇ | ✓ | ◇ | |
| | | 0,5 | 2,0 | 0,25 | 071R0,5 - r 0,25 - | ◇ | ◇ | ◇ | ✓ | ◇ | |
| | | 0,6 | 2,0 | 0,3 | 071R0,6 - r 0,3 - | ◇ | ◇ | ◇ | ✓ | ◇ | |
| | | 0,8 | 2,0 | 0,4 | 071R0,8 - r 0,4 - | ◇ | ◇ | ◇ | ✓ | ◇ | |
| | | 1,0 | 3,0 | 0,5 | 071R1,0 - r 0,5 - | ◇ | ◇ | ◇ | ✓ | ◇ | |
| | | 1,2 | 3,0 | 0,6 | 071R1,2 - r 0,6 - | ◇ | ◇ | ◇ | ✓ | ◇ | |
| | | 1,5 | 3,0 | 0,75 | 071R1,5 - r 0,75 - | ◇ | ◇ | ◇ | ✓ | ◇ | |
| | | 2,0 | 3,0 | 1,0 | 071R2,0 - r 1,0 - | ◇ | ◇ | ◇ | ✓ | ◇ | |



Threading
 Gewindestrehlen
 Filetage

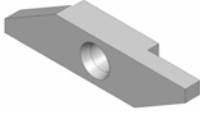
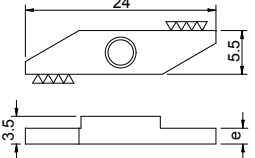
R : Right machining
 R : Bearbeitung rechts
 R : Usinage à droite

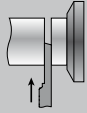
| 080R | Threading insert with partial profile Gewindeplatte mit Teilprofil Fileteur avec profil partiel | a | Article nr. Artikel Nr. N° Article | K10 | B120 | B130 | B140 | TIN |
|---|---|-----|--|-----|------|------|------|-----|
|  |  | 55° | 080R - 55° - | ◇ | ✓ | ◇ | ◇ | ◇ |
| | | 60° | 080R - 60° - | ◇ | ✓ | ◇ | ◇ | ◇ |

| 081R | Threading insert with full profile Gewindeplatte mit Vollprofil Fileteur avec profil complet | a | Pitch Teilung Pas | M | Article nr. Artikel Nr. N° Article | K10 | B120 | B130 | B140 | TIN |
|---|--|-----|-------------------------|---------|--|-----|------|------|------|-----|
|  |  | 60° | 0,20 | - | 081R0,2 | ◇ | ◇ | ◇ | ✓ | ◇ |
| | | 60° | 0,25 | 1 / 1,2 | 081R0,25 | ◇ | ◇ | ◇ | ✓ | ◇ |
| | | 60° | 0,30 | 1,4 | 081R0,3 | ◇ | ◇ | ◇ | ✓ | ◇ |
| | | 60° | 0,35 | 1,6 | 081R0,35 | ◇ | ◇ | ◇ | ✓ | ◇ |
| | | 60° | 0,40 | 2,0 | 081R0,4 | ◇ | ◇ | ◇ | ✓ | ◇ |
| | | 60° | 0,45 | 2,5 | 081R0,45 | ◇ | ◇ | ◇ | ✓ | ◇ |
| | | 60° | 0,50 | 3,0 | 081R0,5 | ◇ | ◇ | ◇ | ✓ | ◇ |
| | | 60° | 0,60 | 3,5 | 081R0,6 | ◇ | ◇ | ◇ | ✓ | ◇ |
| | | 60° | 0,70 | 4,0 | 081R0,7 | ◇ | ◇ | ◇ | ✓ | ◇ |
| | | 60° | 0,75 | 4,5 | 081R0,75 | ◇ | ◇ | ◇ | ✓ | ◇ |
| | | 60° | 0,80 | 5,0 | 081R0,8 | ◇ | ◇ | ◇ | ✓ | ◇ |
| | | 60° | 1,00 | 6,0 | 081R1,0 | ◇ | ◇ | ◇ | ✓ | ◇ |
| | | 60° | 1,25 | 8,0 | 081R1,25 | ◇ | ◇ | ◇ | ✓ | ◇ |
| | | 60° | 1,50 | 10 | 081R1,5 | ◇ | ◇ | ◇ | ✓ | ◇ |

Blank
Rohling
Ebauche

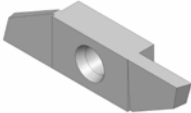
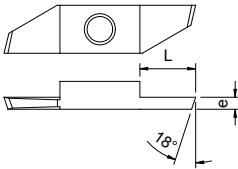
L : Left machining
L : Bearbeitung links
L : Usinage à gauche

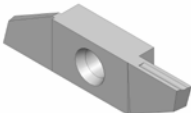
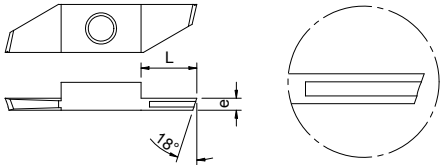
| 040L | Blank insert Rohling Plaquette ébauche | e | Article nr. Artikel Nr. N° Article | K10 | B120 | B130 | B140 | TIN |
|---|---|-----|--|-----|------|------|------|-----|
|  |  | 1,4 | 040L1,4 | ✓ | ◇ | ◇ | ◇ | ◇ |
| | | 1,7 | 040L1,7 | ✓ | ◇ | ◇ | ◇ | ◇ |
| | | 2,0 | 040L2,0 | ✓ | ◇ | ◇ | ◇ | ◇ |
| | | 2,2 | 040L2,2 | ✓ | ◇ | ◇ | ◇ | ◇ |
| | | 3,5 | 040L3,5 | ✓ | ◇ | ◇ | ◇ | ◇ |

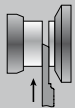


Cutting off \varnothing 8 mm
Abstechen \varnothing 8 mm
Tronçonnage \varnothing 8 mm

L : Left machining
L : Bearbeitung links
L : Usinage à gauche

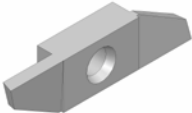
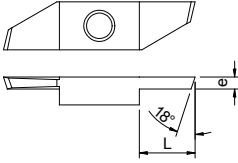
| 050L | Cutting insert 18° Abstechplatte 18° Tronçonneur 18° | e | L | Article nr. Artikel Nr. N° Article | K10 | B120 | B130 | B140 | TIN |
|---|---|-----|-----|--|-----|------|------|------|-----|
|  |  | 0,5 | 2,5 | 050L0,5 | ◇ | ✓ | ✗ | ✗ | ✗ |
| | | 0,8 | 4,0 | 050L0,8 | ◇ | ✓ | ✗ | ✗ | ✗ |
| | | 1,0 | 4,0 | 050L1,0 | ◇ | ✓ | ◇ | ✓ | ✓ |
| | | 1,2 | 5,0 | 050L1,2 | ◇ | ✓ | ◇ | ◇ | ✓ |
| | | 1,5 | 6,5 | 050L1,5 | ◇ | ✓ | ◇ | ✓ | ✓ |
| | | 1,8 | 6,5 | 050L1,8 | ◇ | ✓ | ◇ | ✓ | ✓ |
| | | 2,0 | 6,5 | 050L2,0 | ◇ | ✓ | ◇ | ✓ | ✓ |

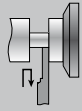
| 054L | Cutting insert with chip roller Abstechplatte mit Spanroller Tronçonneur avec roule-copeau | e | L | Article nr. Artikel Nr. N° Article | K10 | B120 | B130 | B140 | TIN |
|---|--|-----|-----|--|-----|------|------|------|-----|
|  |  | 1,0 | 4,0 | 054L1,0 | ◇ | ✓ | ✗ | ✗ | ✗ |
| | | 1,2 | 5,0 | 054L1,2 | ◇ | ✓ | ◇ | ✓ | ◇ |
| | | 1,5 | 6,5 | 054L1,5 | ◇ | ✓ | ◇ | ✓ | ✓ |
| | | 2,0 | 6,5 | 054L2,0 | ◇ | ✓ | ◇ | ✓ | ◇ |



Opposite cutting off \varnothing 8 mm
Umgekehrtes Abstechen \varnothing 8 mm
Tronçonnage opposé \varnothing 8 mm

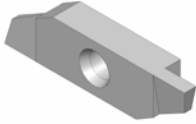
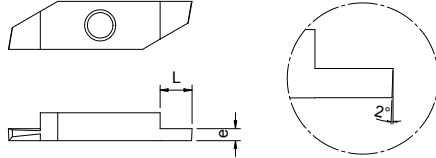
L : Left machining
L : Bearbeitung links
L : Usinage à gauche

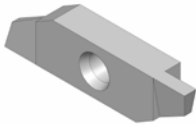
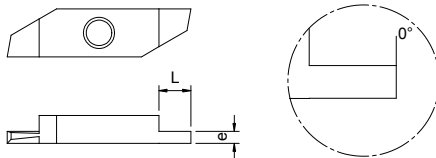
| 053L | Opposite cutting insert 18° Umgekehrte abstechplatte 18° Tronçonneur inversé 18° | e | L | Article nr. Artikel Nr. N° Article | K10 | B120 | B130 | B140 | TIN |
|--|--|-----|-----|--|-----|------|------|------|-----|
|  |  | 1,0 | 4,0 | 053L1,0 | ◇ | ✓ | ◇ | ◇ | ◇ |
| | | 1,2 | 4,0 | 053L1,2 | ◇ | ✓ | ✗ | ✗ | ✗ |
| | | 1,5 | 6,5 | 053L1,5 | ◇ | ✓ | ◇ | ◇ | ◇ |
| Use with OxxR tool-holders Verwendung mit OxxR Werkzeughalter Utilisation avec les porte-outils OxxR | | | | | | | | | |

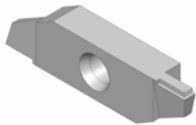
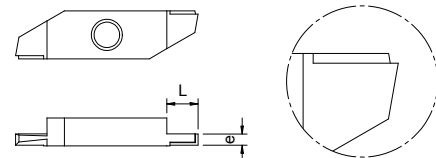


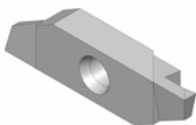
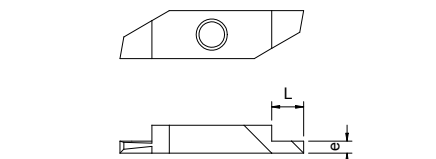
Back turning
Drehen hinter dem Bund
Tournage arrière


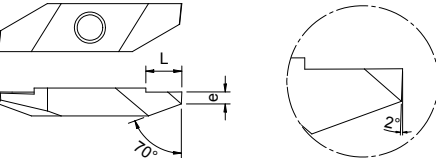
L : Left machining
L : Bearbeitung links
L : Usinage à gauche

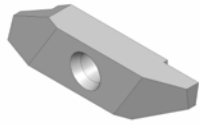
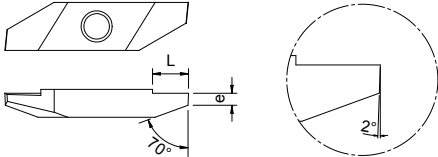
| 060L | Back turning insert 2° Drehplatte hinten 2° Tourneur arrière 2° | e | L | Article nr. Artikel Nr. N° Article | K10 | B120 | B130 | B140 | TIN |
|---|---|-----|-----|--|-----|------|------|------|-----|
|  |  | 1,0 | 2,5 | 060L1,0 | ◇ | ✓ | ✗ | ✓ | ✗ |
| | | 1,2 | 3,0 | 060L1,2 | ◇ | ✓ | ◇ | ◇ | ✓ |
| | | 1,5 | 3,0 | 060L1,5 | ◇ | ✓ | ◇ | ◇ | ✓ |
| | | 1,8 | 4,5 | 060L1,8 | ◇ | ✓ | ◇ | ◇ | ◇ |
| | | 2,0 | 4,5 | 060L2,0 | ◇ | ✓ | ◇ | ◇ | ✓ |

| 060LP | Back turning insert 0° Drehplatte hinten 0° Tourneur arrière 0° | e | L | Article nr. Artikel Nr. N° Article | K10 | B120 | B130 | B140 | TIN |
|---|---|-----|-----|--|-----|------|------|------|-----|
|  |  | 1,0 | 2,5 | 060LP1,0 | ◇ | ✓ | ✗ | ✗ | ✗ |
| | | 1,2 | 3,0 | 060LP1,2 | ◇ | ✓ | ◇ | ◇ | ◇ |
| | | 1,5 | 3,0 | 060LP1,5 | ◇ | ✓ | ◇ | ◇ | ◇ |
| | | 1,8 | 4,5 | 060LP1,8 | ◇ | ✓ | ◇ | ◇ | ◇ |
| | | 2,0 | 4,5 | 060LP2,0 | ◇ | ✓ | ◇ | ◇ | ◇ |

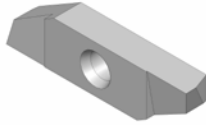
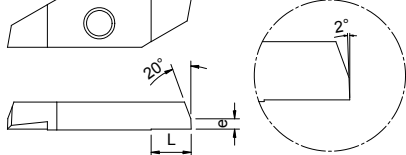
| 060LPX | Back turning insert 0° with chip breaker Drehplatte hinten 0° mit Spanbrecher Tourneur arrière 0° avec brise-copeau | e | L | Article nr. Artikel Nr. N° Article | K10 | B120 | B130 | B140 | TIN |
|---|---|-----|-----|--|-----|------|------|------|-----|
|  |  | 1,0 | 2,5 | 060LPX1,0 | ◇ | ✗ | ✓ | ✗ | ✗ |
| | | 1,2 | 3,0 | 060LPX1,2 | ◇ | ◇ | ✓ | ◇ | ◇ |
| | | 1,5 | 3,0 | 060LPX1,5 | ◇ | ◇ | ✓ | ◇ | ◇ |
| | | 1,8 | 4,5 | 060LPX1,8 | ◇ | ◇ | ✓ | ◇ | ◇ |

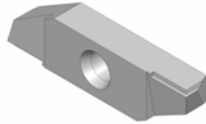
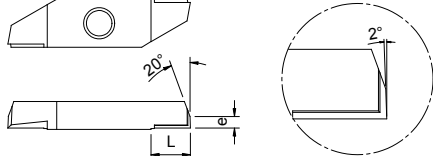
| 061L | Back turning insert with «parisian cut» Drehplatte hinten mit «Pariserschliff» Tourneur arrière avec «coupe parisienne» | e | L | Article nr. Artikel Nr. N° Article | K10 | B120 | B130 | B140 | TIN |
|---|---|-----|-----|--|-----|------|------|------|-----|
|  |  | 0,5 | 1,5 | 061L0,5 | ◇ | ✗ | ✗ | ✓ | ✗ |
| | | 0,8 | 2,0 | 061L0,8 | ◇ | ✗ | ✗ | ✓ | ✗ |
| | | 1,0 | 2,5 | 061L1,0 | ◇ | ✓ | ✗ | ✓ | ✗ |
| | | 1,2 | 3,0 | 061L1,2 | ◇ | ✓ | ◇ | ✓ | ✓ |
| | | 1,5 | 3,0 | 061L1,5 | ◇ | ✓ | ◇ | ✓ | ✓ |
| | | 2,0 | 4,5 | 061L2,0 | ◇ | ✓ | ◇ | ✓ | ✓ |
| | | 2,5 | 4,5 | 061L2,5 | ◇ | ✓ | ◇ | ✓ | ✓ |

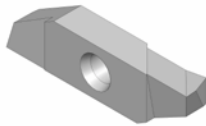
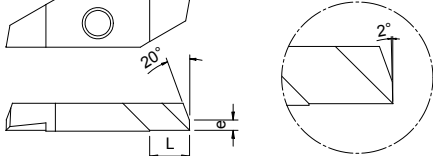
| 062L | Back turning insert 0° with «parisian cut» Drehplatte hinten 0° mit «Pariserschliff» Tourneur arrière 0° avec «coupe parisienne» | e | L | Article nr. Artikel Nr. N° Article | K10 | B120 | B130 | B140 | TIN |
|---|--|-----|-----|--|-----|------|------|------|-----|
|  |  | 1,5 | 4,5 | 062L1,5 | ◇ | ✓ | ◇ | ✓ | ◇ |

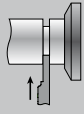
| 062LO | Back turning insert 2° Drehplatte hinten 2° Tourneur arrière 2° | e | L | Article nr. Artikel Nr. N° Article | K10 | B120 | B130 | B140 | TIN |
|---|---|-----|-----|--|-----|------|------|------|-----|
|  |  | 1,5 | 4,0 | 062LO | ◇ | ✓ | ◇ | ◇ | ◇ |

|  | Front turning Drehen vor dem Bund Tournage avant | L : Left machining L : Bearbeitung links L : Usinage à gauche |
|---|--|---|
|---|--|---|

| 064L | Front turning insert Drehplatte vorne Tourneur avant | e | L | Article nr. Artikel Nr. N° Article | K10 | B120 | B130 | B140 | TIN |
|---|--|-----|-----|--|-----|------|------|------|-----|
|  |  | 1,5 | 5,0 | 064L | ◇ | ✓ | ◇ | ✓ | ✓ |

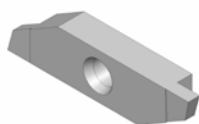
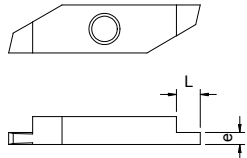
| 064LX | Front turning insert with chip breaker Drehplatte vorne mit Spanbrecher Tourneur avant avec brise-copeau | e | L | Article nr. Artikel Nr. N° Article | K10 | B120 | B130 | B140 | TIN |
|---|--|-----|-----|--|-----|------|------|------|-----|
|  |  | 1,5 | 5,0 | 064LX | ◇ | ◇ | ✓ | ◇ | ◇ |

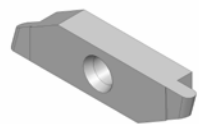
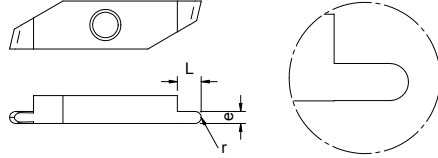
| 065L | Front turning insert with chip roller Drehplatte vorne mit Spanroller Tourneur avant avec roule-copeau | e | L | Article nr. Artikel Nr. N° Article | K10 | B120 | B130 | B140 | TIN |
|---|--|-----|-----|--|-----|------|------|------|-----|
|  |  | 1,5 | 5,0 | 065L | ◇ | ✓ | ◇ | ✓ | ✓ |

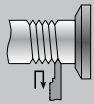


Grooving Einstechen Rainurage

L : Left machining
L : Bearbeitung links
L : Usinage à gauche

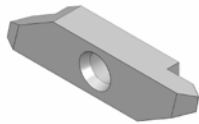
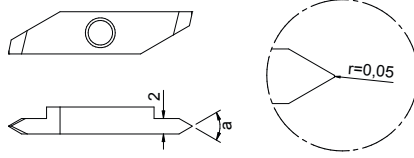
| 070L | Grooving insert Einstechplatte Plaque de rainurage | e | L | Article nr. Artikel Nr. N° Article | K10 | B120 | B130 | B140 | TIN |
|---|---|-----|-----|--|-----|------|------|------|-----|
| | | | | | | | | | |
|  |  | 0,5 | 1,5 | 070L0,5 | ◇ | ✓ | ◇ | ◇ | ◇ |
| | | 0,6 | 1,5 | 070L0,6 | ◇ | ✓ | ◇ | ◇ | ◇ |
| | | 0,7 | 1,5 | 070L0,7 | ◇ | ✓ | ◇ | ◇ | ◇ |
| | | 0,8 | 1,5 | 070L0,8 | ◇ | ✓ | ◇ | ◇ | ◇ |
| | | 0,9 | 2,0 | 070L0,9 | ◇ | ✓ | ◇ | ◇ | ◇ |
| | | 1,0 | 2,5 | 070L1,0 | ◇ | ✓ | ◇ | ◇ | ◇ |
| | | 1,1 | 2,5 | 070L1,1 | ◇ | ✓ | ◇ | ◇ | ◇ |
| | | 1,2 | 2,5 | 070L1,2 | ◇ | ✓ | ◇ | ◇ | ◇ |
| | | 1,3 | 2,5 | 070L1,3 | ◇ | ✓ | ◇ | ◇ | ◇ |
| | | 1,4 | 2,5 | 070L1,4 | ◇ | ✓ | ◇ | ◇ | ◇ |
| | | 1,5 | 2,5 | 070L1,5 | ◇ | ✓ | ◇ | ◇ | ◇ |

| 071L | Grooving insert with radius Einstechplatte mit Radius Plaque de rainurage avec rayon | e | L | r | Article nr. Artikel Nr. N° Article | K10 | B120 | B130 | B140 | TIN |
|---|--|-----|-----|------|--|-----|------|------|------|-----|
| | | | | | | | | | | |
|  |  | 0,5 | 2,0 | 0,25 | 071L0,5 - r 0,25 - | ◇ | ◇ | ◇ | ✓ | ◇ |
| | | 0,8 | 2,0 | 0,4 | 071L0,8 - r 0,4 - | ◇ | ◇ | ◇ | ✓ | ◇ |
| | | 1,0 | 3,0 | 0,5 | 071L1,0 - r 0,5 - | ◇ | ◇ | ◇ | ✓ | ◇ |
| | | 1,2 | 3,0 | 0,6 | 071L1,2 - r 0,6 - | ◇ | ◇ | ◇ | ✓ | ◇ |
| | | 1,5 | 3,0 | 0,75 | 071L1,5 - r 0,75 - | ◇ | ◇ | ◇ | ✓ | ◇ |
| | | 2,0 | 3,0 | 1,0 | 071L2,0 - r 1,0 - | ◇ | ◇ | ◇ | ✓ | ◇ |



Threading Gewindestrehlen Filetage

L : Left machining
L : Bearbeitung links
L : Usinage à gauche

| 080L | Threading insert with partial profile Gewindeplatte mit Teilprofil Fileteur avec profil partiel | a | Article nr. Artikel Nr. N° Article | K10 | B120 | B130 | B140 | TIN |
|---|---|-----|--|-----|------|------|------|-----|
| | | | | | | | | |
|  |  | 55° | 080L - 55° - | ◇ | ✓ | ◇ | ◇ | ◇ |
| | | 60° | 080L - 60° - | ◇ | ✓ | ◇ | ◇ | ◇ |



Represented by Vertretet durch Représenté par

